

# WRAP Update

*Newsletter of the Wisconsin Registry for Alzheimer's Prevention*

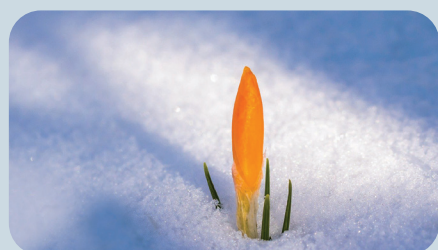


## The WAI introduces the Diversity, Equity, and Inclusion Statement

We believe that racism is a public health crisis affecting the communities we serve and society as a whole and have signed on to the Racism is a Public Health Crisis in Wisconsin Declaration.

The Wisconsin Alzheimer's Institute is committed to health equity and inclusive excellence that embraces diversity among its faculty, staff, students, research participants, stakeholders, and constituents.

- We embrace a definition of diversity that acknowledges the richness of all races and ethnicities, identities, ages, abilities, experiences, and opinions.
- We embrace a definition of inclusion that acknowledges the unique contributions of all and prioritizes people just as much as the desired outcomes of our organization.
- We embrace a definition of health equity where everyone has a fair and just opportunity to be as healthy as possible with resources that are accessible to all.



## The WAI Diversity, Equity and Inclusion Statement guides WRAP's future as it reaches its 20th year

*By Sterling Johnson, PhD, Principal Investigator, WRAP Study*

The Wisconsin Registry for Alzheimer's Prevention turns 20 years old this year! We are proud to be one of the world's largest and longest running research studies on Alzheimer's disease. This designation is only possible because of you — our participants. Throughout 2021, we will celebrate and share our appreciation while we look to the future and highlight the ways you, through your participation in WRAP, help us identify ways to build resistance to the disease and bolster brain health.

As we look to the future of WRAP, we acknowledge the many societal challenges we've experienced this year and how they shape our next steps. As a principal investigator, I'm reminded that systemic discrimination and healthcare inequities disproportionately impact African Americans and other historically disenfranchised groups. WRAP and the Wisconsin Alzheimer's Institute signed onto the UW Population Health Institute's resolution declaring racism a public health crisis in Wisconsin; our study and the WAI are commit-

ted to taking action to address this crisis now and as we build our plans for the next 20 years. WAI's statement on Diversity, Equity, and Inclusion is the foundation for our actions this year and beyond. We will share our goals, benchmarks, and progress while we embark on this essential work. Our first steps in addressing these disparities is to increase our transparency and education efforts about our research, and to have more people of color participate in biomarker study visits.

WRAP is currently recruiting people of color and certain blood relatives of current WRAP participants, and there are other Alzheimer's disease studies at the UW with enrollment opportunities. You can find more information about enrollment on our website, [wrap.wisc.edu](http://wrap.wisc.edu). ✱



*Sterling Johnson, PhD  
Principal Investigator,  
WRAP Study*

# DETERMINED



The independent film *Determined* has been selected to be part of the Green Bay Film Festival. *Determined* is an independent documentary featuring researchers and volunteer research participants at the Wisconsin Registry for Alzheimer's Prevention (WRAP). The film will be available to watch on your favorite device until April 4. Tickets are available here:

[go.wisc.edu/iulc49](http://go.wisc.edu/iulc49)

From the Green Bay Film Festival:

Three women at high risk for Alzheimer's disease offer their brains and bodies to a medical study. After the deaths of their mothers, these daughters are determined to contribute to the search for a cure. This is the latest fight against Alzheimer's - by those with a very personal stake in the battle. With nuance and tenderness, the film interweaves the scientists' quest to find a cure with the personal ups and downs of these women's lives. The intimate access to all of their stories reminds viewers that Alzheimer's is a disease battled on many fronts: in a lab, in a home, in a marriage, in a community, and in one's hopes and fears about the future.

# Watch Now: 2020 Info Session Videos

If you didn't get a chance to watch the 2020 Info Sessions presentations, you can now watch them online on the [wrap.wisc.edu](http://wrap.wisc.edu) website. These videos highlight some of the most exciting findings from WRAP studies. You can preview several presentations below.

### What is Alzheimer's disease?



### Info Session Part 2: The Evolving Definition of Alzheimer's Disease

Nathaniel Chin, MD

The definition of Alzheimer's disease continues to evolve as we learn more about how the disease affects the brain. Dr. Nathaniel Chin, medical director for the Wisconsin ADRC, presents the most recent definition of Alzheimer's disease, based on new medical research findings.

### WAI-Milwaukee Recruitment Strategy II

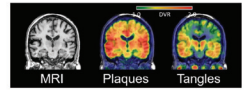


### Info Session 4.4 Discoveries: Disparities and African American Participation

Gina Green-Harris, MBA

Green-Harris, MBA, provides an informative look into underrepresented groups in research and shares the steps that the Wisconsin Alzheimer's Institute is taking to address disparities and increase African American participation in research.

### Biomarkers are at the forefront of understanding when, how and why AD develops



### Info Session Part 5: Our Next Steps for WRAP Research

Sterling Johnson, PhD

We continue to adapt our studies as we learn more about Alzheimer's disease. In this video, Sterling Johnson, PhD, principal investigator for the WRAP study, details some important findings from WRAP biomarker research, and shares the next steps for the study.

# Celebrate 20 Years of the WRAP Study!

2021 marks our 20th year of the Wisconsin Registry for Alzheimer's Prevention study. In the coming months, we will celebrate this milestone and the many achievements of the study, thanks to our dedicated study participants and team of research experts.

We hope you will join us later in 2021 for our celebration event – but until then, we will be sharing more information about our history and future research directions.

For more information, go to our website [wrap.wisc.edu/20years](http://wrap.wisc.edu/20years).



Wisconsin Registry for Alzheimer's Prevention  
UNIVERSITY OF WISCONSIN  
SCHOOL OF MEDICINE AND PUBLIC HEALTH

From the Milwaukee office:

# Addressing Systemic Racism Webinar Series

In collaboration with the Center for Community Engagement and Health Partnership, UW All of US Research Program in Milwaukee, and Lifecourse Initiative for Healthy Families, the Wisconsin Alzheimer's Institute Regional Milwaukee Office launched the Addressing Systemic Racism series to address systemic chronic racism by providing an opportunity for the community to learn how racism affects people of color across all ages. The series kicked off on Juneteenth Day (June 19), the holiday that celebrates the emancipation of those who had been enslaved in the United States.

Speakers from throughout the region led webinars and provided truthful discussions about the roots of racism in modern culture and how racism leads to health disparities and poor health outcomes for African Americans. Throughout this series, speakers and the WAI representatives provide actionable steps for creating solutions to systemic racism in today's society.

The series has covered seven topics, listed in the webinar titles below. You can watch each one on-demand on the WAI website:

[wai.wisc.edu/addressing-systemic-racism/](http://wai.wisc.edu/addressing-systemic-racism/)

## Series Outline:

1. Addressing Systemic Racism: From its Origins to its Impact Throughout Life
2. Reforming our Health and Healthcare Systems
3. Impact of Media on Narrative of Black Americans
4. Further Exploring Historical Trauma
5. The Legacy of African Americans in Science and Research
6. The Toll of Infant Mortality and Prematurity on African American Families
7. The Impact on African Americans with Alzheimer's Disease and Related Dementia

## WRAP Staff News and Updates

WRAP Study coordinators, PET technicians, and other participant-facing staff have steadily been receiving their COVID vaccines over the last few weeks. Employee vaccinations are an added layer of safety to our COVID protocols, and we'll continue wearing masks, social distancing, and washing hands to ensure the safest possible environment for in-person studies. For more information about vaccine distribution, go to the official CDC website:

[www.cdc.gov/coronavirus](http://www.cdc.gov/coronavirus)



Nathaniel Chin, MD  
medical director for WRAP



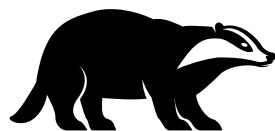
Caitlin Artz, MSW,  
assistant program manager for  
WRAP



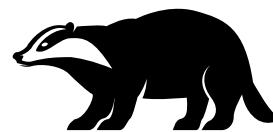
Wisconsin Registry  
for Alzheimer's Prevention  
UNIVERSITY OF WISCONSIN  
SCHOOL OF MEDICINE AND PUBLIC HEALTH



# While we remain apart, there are ways to **STAY CONNECTED!**



← 6 feet / 3 badgers →



Badgers Physically Distance

## Call or email us:

WAI Madison WRAP site

(608) 265-5834 | [wrap@medicine.wisc.edu](mailto:wrap@medicine.wisc.edu)

WAI La Crosse WRAP site

(608) 392-7187 | [kaseno.jodi@mayo.edu](mailto:kaseno.jodi@mayo.edu)

WAI Milwaukee WRAP site

(414) 219-7911 | [cmramsey@wisc.edu](mailto:cmramsey@wisc.edu)



Wisconsin Registry  
for Alzheimer's Prevention

UNIVERSITY OF WISCONSIN  
SCHOOL OF MEDICINE AND PUBLIC HEALTH

Visit us online!

[wrap.wisc.edu](http://wrap.wisc.edu)

- Volunteer for WRAP or other related studies
- Info about study visits
- View 2020 Info Sessions videos

## DEMENTIA MATTERS

A podcast about Alzheimer's disease

**LISTEN  
NOW** 



Dr. Nathaniel Chin  
Host

Listen wherever you get your  
podcasts, or find it online:

[adrc.wisc.edu/dementia-matters](http://adrc.wisc.edu/dementia-matters)

## HEADLINES

Subscribe to our e-newsletter  
for research news, upcoming  
events and brain health tips



Visit [adrc.wisc.edu/newsletter](http://adrc.wisc.edu/newsletter)  
and fill out the web form